

Scan to
cloud servers

High Productivity, High Versatility



600
DPI



Up to
100
pages

100 ppm
200 ipm
scanning speed

1
Ultrasonic
sensor

236"
Long
page



Features:

- Scan rate up to 100 ppm and 200 ipm (A4, Color, 200 dpi)
- Scans double-sided color documents up to A3 size (ADF)
- Includes an A4 flatbed scanner
- Includes an imprinter that can print characters on the back of the scanned documents
- Max. scanning size: 310 x 432 mm (12.2 x 17 in.) (paper width up to 330 mm)
- Track the network-connected scanner's IP address
- Fast scan rate up to 100 pages per minute and 200 images per minute at 200 dpi in color, gray, or B&W mode
- Friction roller technology delivers outstanding feeding reliability
- Ultrasonic multi-feed detection
- Earth-friendly LED technology
- Compact auto document feeder holds documents up to 100 pages
- Easy-to-use button scanning
- Supports 236" (600cm) long page scanning
- Auto power off setting

A New Generation of A3 Document Scanner

Enhanced with innovative features, the Avison AD7080 offers high throughput of 100 ppm and 200 ipm in a compact unit. Unlike common sheet-fed scanners which provide only the auto document feeder and can not accommodate irregular sizes and weights of paper, the AD7080 harmoniously combines the benefits of the fast scan rate of the ADF up to A3 size and the convenience of the A4 flatbed unit to meet customer's diverse requirements.

A Document Scanner with an Imprinter

The AD7080 is a quality document scanner integrated with an imprinter. The innovative combination allows users to print a sequence number or characters physically on the rear side of each page that is being scanned. By printing serial numbers, the scanned data can be tracked, matched and/or indexed with the original document.



A Duplex Scanner Suited for Document and Cards

Thanks to the advanced straight paper path and image processing technology, mixed batches of documents with various sizes and weights can be scanned, appropriately cropped, deskewed, and ready to use. Scan size accepts paper from receipts 50 x 88 mm (2 x 3.5 in.) to A3 document 297 x 432 mm (11.69 x 17 in.). The auto document feeder is also robust enough to feed paper up to 209 g/m² (56 lb.) and embossed hard cards such as ID cards, credit cards, driver's license, and health insurance card up to 1.25 mm in thickness.

Friction Roller Enhances Feeding Reliability

Designed with the innovative friction roller for advanced paper separation capability, the AD7080 delivers outstanding feeding reliability and operating productivity by effectively reducing the risk of a multi-feed or paper jam.

High-Volume Daily Duty Cycle

The scanner can be used to scan up to 8,000 pages per day through the 100-page automatic document feeder. The data indicates that this scanner is designed to scan document in any application requiring frequent document and hard card scanning.

Automatic multiple images cropping

In addition, the scanner comes with the convenient feature of multiple images cropping. With this feature, various sizes of documents such as photos, ID Cards, or business cards can be placed on the flatbed and the scanner is able to crop and create multiple images according to the original sizes of the documents in one single scan.

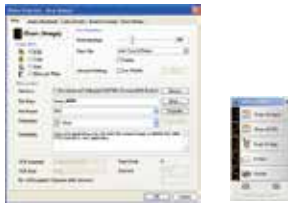
Powerful bundled software applications

The AD7080 come with TWAIN and ISIS drivers, and are bundled with a suite of powerful software applications that include Avison Button Manager V2, AVScan X, and Nuaunce PaperPort 11SE. With Button Manager V2, you can scan to searchable PDF, JPEG, BMP, or GIF file format, save to folder on your computer, and scan to e-mail, image editing application, or even a cloud application such as Google Drive, or Microsoft SharePoint with a press of a button. The AVScan X and Nuaunce PaperPort are highly effective image processing and document management software that helps you streamline your task more efficiently.

Avision | AD7080 Document Scanner

Avision's Button Manager V2

Completes your scan with a single step



The Button Manager V2 main screen

Button Manager V2 makes it easy for you to scan and send your image to your favorite destinations with a press of one button. Now the new version comes with an innovative feature to let you scan and automatically upload the scanned document to popular cloud repositories such as Google Docs, Microsoft SharePoint or FTP. In addition, the iScan feature allows you to insert the scanned image or recognized text after optional OCR (Optical Character Recognition) process to your text editor such as Microsoft Word to get your job done easily and quickly.

AVScan X

The Intelligent Document Management Tool



The AVScan X main screen

Document Imaging is the very first step of Document Management. However, poor quality images can cause serious problems to later indexing or storing processes. It may increase scanning labor costs and lower the OCR accuracy. AvScan X ensures all documents are checked and polished at the time they are scanned such that the image quality is guaranteed before they are ready to use for other purposes. AvScan X is an intelligent scanning and electronic filing solution. AvScan X possesses distinct features that convert and index scanned information into electronic documents for easy storage and fast retrieval.

Nuance PaperPort SE14

- The Professional Choice to Organize and Share Your Documents



The PaperPort SE14 main screen

PaperPort SE 14 is Nuance's most popular scanning and document management solution, carefully designed specifically for home office use. Part traditional file cabinet, part digital-document desktop, PaperPort SE 14 is the fastest and easiest way to scan, share, search, and organize your documents. Additionally, PaperPort SE 14 now delivers anytime-anywhere access to your most important files however it's convenient for you - using a PC, Mac, iPhone, iPad, or Android device.



PAPERPORT SE 14



Avision Button Manager V2

AVScan X



TWAIN



Avision AD7080 Product Specifications

Paper Feeding:	ADF 100-page capacity with flatbed
Scanning Technology:	CCD
Light Source:	LED (LIGHT BAR)
Card Thickness:	Up to 1.25 mm
Long Page Mode:	6000 mm (236 in.)
Document size (ADF):	Min. 50 x 88 mm (2 x 3.5 in.) Max. 310 x 432 mm (12.2 x 17 in.) (Paper width up to 330 mm)
Document Size (Flatbed):	Max. 216 x 297 mm (8.5 x 11.7 in.)
ADF Scanning Speed:	100 PPM/ 200 IPM (color, A4, 200 dpi) 80 PPM/ 160 IPM (color, A4, 300 dpi)
Flatbed Scanning Speed:	4 sec.(color, A4, 300 dpi)
Paper Thickness:	28~209 g/m ² (7~56 lb.)
Optical Resolution:	600 dpi
Output Resolution:	75, 100, 150, 200, 300, 400, 600 and 1200 dpi
Output Formats:	B/W, greyscale, 24-bit color
File Formats:	BMP, PNG, GIF, JPEG, PDF, Searchable PDF Multi-Page TIFF, TIFF, RTF, TXT, XPS, DOC, XLS, PPT, DOCX, XLSX, PPTX, HTML.
Bundled Software:	Avision Button Manager V2, Avision AVScan X Nuance PaperPort SE 14
Interface/Drivers:	USB 2.0 / TWAIN , ISIS RJ45 Ethernet 10/100Mb
Power Supply:	Input: 100~240 VAC, 50/60 Hz Output: 19V, 4.74A
Power Consumption:	Operating: 90 W Ready: 25 W Sleep: 0.3 W Off: 0.3 W
Environmental Factors:	Operating temperature: 10°C to 35°C (50°C to 95°C) Operating humidity: 10% to 85%
Acoustic Noise:	Standby: <45 dB Operating: <60 dB
Dimensions (W x D x H):	Max. : 1192 x 526 x 378 mm (46.93 x 20.71 x 14.88 in.) Min. : 646 x 526 x 388 mm (25.43 x 20.71 x 15.28 in.)
Weight:	23.44 kg (51.68 lb)
Recommended Daily Scanning Volume:	Up to 8,000 sheets
Multi-feed Detection:	Ultrasonic Sensor
Safety/EMC Certificate	CE EN55022 EN55024 CB EN60950-1

We have endeavored to ensure that the information in this manual is accurate and that Avision is not responsible for printing or typographical errors. The above configuration is for reference only. The actual configuration (software, hardware) should be compiled with the specification described in the purchase agreement. Avision Inc. owns the intellectual property rights of the product outlook and design and the product outlook and design are subject to change. Avision reserves the right to the interpretation of the product description. Avision, Inc. All rights reserved. Other company and product names mentioned in this document are trademarks of their respective companies. Wherein the third party product is for reference only and Avision does not warrant their products nor is responsible for the efficiency or use of these products.

System Requirements

CPU:	Intel Core 2 Duo or higher
Memory:	2GB (32 bit Windows) 4GB (64bit Windows)
DVD-ROM:	DVD ROM Drive
USB:	USB2.0 Port (USB 1.1 supported)
Windows Operating System:	Windows XP SP3, Vista, 7, 8.x, 10(32 & 64 bit)

Contents:

Scanner
Power Supply
Quick Guide
USB 2.0 Cable
CD-ROM includes:
-Scanner Driver
(TWAIN/ ISIS/ WIA Driver)
-Avision Manager V2
-Avision AVScan X
-Nuance PaperPort SE 14



Avision
www.avision.com