

Efficient Duplex Scanning



Features:

- Ultrasonic multi-feed detection
- Large 11.7" x 16.5" scanning area
- Multiple images cropping
- 118" (300 cm) long document scanning
- Easy-to-use button scanning
- Auto crop, deskew and thresholding image-enhancing features
- Bundled software applications include Avison Button Manager V2, Avison AvScan X, Nuance PaperPort SE14

A slim A3 duplex scanner

The AV5400 is Avison's next generation of A3 document scanner. Based on CIS (Contact Image Sensor) technology, the scanner is much more slimmer compared to traditional scanner with CCD design.

Capable of scanning up to A3 size, the slim AV5400 is perfectly suited to scan complete book spreads, two letter-sized pages (simultaneously), large-format magazines, legal-sized documents, photographs and more, all in brilliant color.

The AV5400 supports paper up to A3 size. Yet, it is also a fast scanner. With the 50-page auto document feeder, the AV5400 offers high scan rate of up to 30 pages per minute and 60 images per minute (color, 300 dpi, landscape). The AV5400 accepts paper from. The 50-page auto document feeder is also robust enough to feed paper in size between 5.8" x 8.3" and A3 (11.7" x 16.5") and in weight between 60 g/m² (16 lb) and 105 g/m² (28 lb).

Multiple Crop Feature

In addition, the scanner comes with the convenient feature of multiple images cropping. With this feature, various sizes of documents such as photos, ID Cards, or business cards can be placed on the flatbed and the scanner is able to crop and create multiple images according to the original sizes in one single scan.

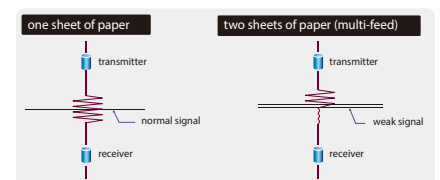
Earth-Friendly LED Technology

The AV5400 delivers high throughput and outstanding performance. However, it is earth-friendly at the same time. The LED technology requires no warm up time

requires no warm up time and is lower power consumption without generating mercury vapor as other traditional scanners using the CCFL (cold cathode fluorescent lamp) technology.

Ultrasonic Multi-Feed Detection

With the built-in ultrasonic multi-feed detection capability, the scanner allows you to set overlapped paper by detecting paper thickness between document. When multi-feed is detected a warning message will be prompted.



High-Volume Daily Duty Cycle

The scanner can be used to scan up to 3,000 pages per day through the 50-page automatic document feeder. The data indicates that this scanner is designed to scan document in any application requiring frequent document and hard card scanning.

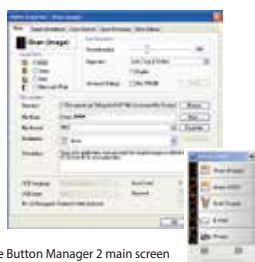
What we have bundled

The AV5400 comes with TWAIN and ISIS drivers, and are bundled with a suite of powerful software applications that include Avison Button Manager V2, AvScan X, and Nuance PaperPort SE 14.

Avision AV5400 A3 Duplex Document Scanner

Avision's Button Manager V2

Complete your scan in a single step



The Button Manager 2 main screen

Button Manager V2 makes it easy for you to scan and send your image to your favorite destinations with a press of one button. Now the new version comes with an innovative feature to let you scan and automatically upload the scanned document to popular cloud repositories such as Google Docs, Microsoft SharePoint, or FTP. In addition, the iScan feature allows you to insert the scanned image or recognized text after optional OCR (Optical Character Recognition) process to your text editor such as Microsoft Word to get your job done easily and quickly.

AvScan X

-The Intelligent Document Management Tool



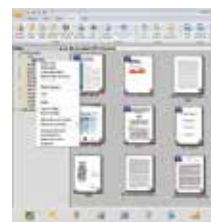
The AvScan X main screen

Document Imaging is the very first step of Document Management. However, poor quality images can cause serious problems to later indexing or storing processes. It may increase scanning labour costs and lowers the OCR accuracy. AvScan X ensures all documents are checked and polished at the time they are scanned such that the image quality is guaranteed before they are ready to use for other purposes.

AvScan X is an intelligent scanning and electronic filing solution. AvScan X possesses distinct features that convert and index scanned information into electronic documents for easy storage and fast retrieval.

Nuance PaperPort SE14

-The Professional Choice to Organize and Share Your Documents



The PaperPort SE14 main screen

PaperPort SE 14 is Nuance's most popular scanning and document management solution, carefully designed specifically for home office use. Part traditional file cabinet, part digital-document desktop, PaperPort SE 14 is the fastest and easiest way to scan, share, search, and organize your documents. Additionally, PaperPort SE 14 now delivers anytime-anywhere access to your most important files however it's convenient for you – using a PC, Mac, iPhone, iPad, or Android device.

Avision AV5400 Product Specifications

Paper Feeding:	50-page ADF and flatbed
Scanning Technology:	Contact Image Sensor (CIS)
Document size (ADF):	Max. 297 mm x 420 mm (11.7 in x 16.5 in) Min. 148 mm x 210mm (5.8 in x 8.3 in)
Document Size (Flatbed):	Max. 297 mm x 420 mm (11.7 in x 16.5 in)
Paper Thickness:	60~105 g/m ² (16~28 lbs)
Scanning Speed:	50 PPM /100 IPM (B/W,Greyscale@300dpi, A4, Landscape) 30 PPM /60 IPM (Color@300dpi, A4, Landscape)
Long Page Mode:	118"
Optical Resolution:	600 dpi
Output Resolution:	75, 100, 150, 200, 300, 400, 600 and 1200 dpi
Output Formats:	B/W, greyscale, 24-bit, color
File Formats:	BMP, PNG, GIF, JPEG, PDF, Searchable PDF Multi-Page TIFF, TIFF, RTF, TXT, XPS, DOC, XLS, PPT, DOCX, XLSX, PPTX, HTML.
Bundled Software:	Avision Button Manager V2, Avision AvScan X Nuance PaperPort SE 14
Interface/Drivers:	USB 2.0 / TWAIN, ISIS, WIA
Power Supply:	Input: 100~240 VAC, 50/60 Hz Output: 24V, 2.0A
Power Consumption:	Operation: 35 W Ready: 15 W Sleep: 2.9 W
Environmental Factors:	Operating temperature: 10°C to 35°C (50°F to 95°F) Operating humidity: 10% to 85%
Acoustical Noise:	Standby: <45 dB Operating: <50 dB
Dimensions (W x D x H):	585 mm x 499 mm x 195 mm (23 in x 19.6 in x 7.8 in)
Weight:	11.81 kg (26.04 lb.)
Recommended Daily Scanning Volume:	Up to 3,000 Sheets
Multi-feed Detection:	Ultrasonic Sensor

System Requirements

- CPU: Intel® Core 2 Duo or higher
- Memory: 2GB (32bit Windows)
4GB (64bit Windows)
- DVD-ROM: DVD ROM Drive
- USB: USB2.0 Port (USB 1.1 supported)
- Windows® Operating System:
Windows® XP SP3, Vista, 7, 8.x (32 & 64 bit)

Contents

- AV5400 Scanner
- Power Supply
- Quick Guide
- USB 2.0 Cable
- CD-ROM includes:
 - Scanner Driver
(TWAIN/ISIS/WIA Driver)
 - Avision Button Manager V2
 - Avision AvScan X
 - Nuance PaperPort SE14



Avision

www.avision.com

Avision Inc.

No. 20, Creation Rd. I
Hsinchu Science Park 300093, Taiwan,
R.O.C.
Tel: 886-3-5782388
Fax: 886-3-5777017
E-mail: sales@avision.com.tw

Avision Europe GmbH

Siemensring 91
47877 Willich
Germany
Tel: +49-2154-88850-0
Fax: +49-2154-88850-29
E-mail: w.kuo@avision-europe.com



The registered brand names and product names mentioned in this document belong to each respective holder.
Energy Star name and marks, registered marks owned by the U.S. government
The information contained in this document(s) is subject to change without notice.