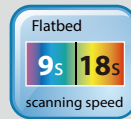
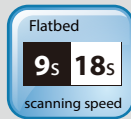


PaperAir

Find My Document Quickly!

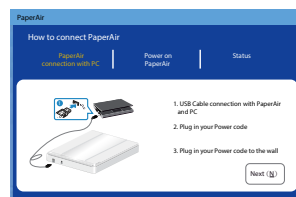


PaperAir 10



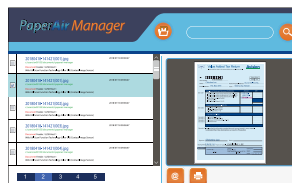
Features:

- The Book cover lets you scan thick documents or magazines
- Ultra slim – 1.8 inches in height and 1.4 kg in weight
- Scan size up to A4 (8.5" x 11.7")
Optical resolution up to 600 dpi
- Scans an A4-size page needs only 9 seconds (color, 300 dpi)
- Auto resolution
- High speed USB 2.0 port



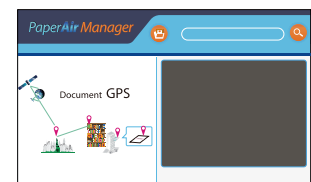
Easy Installation

Installation is easy as a breeze by following our graphic and step-by-step installation & problem solving guide.



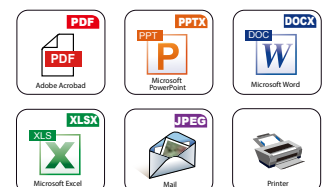
Easy Search

Documents can be searched by content, tag, file name over different file formats including jpeg, PDF, Microsoft Word, Powerpoint, and Excel.



Easy Scan

Simply press the Scan button, the scan is started with the predefined scan settings and the scanned image is stored in a predefined file location.



Easy Destination

You can easily choose the predefined destinations including E-mail, and Printer to send out your images once scanned.

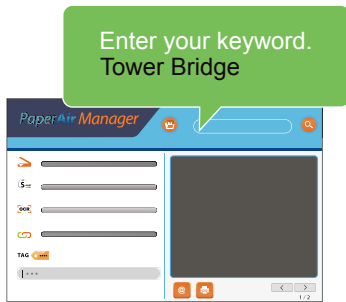
PaperAir 10

How to find the document out of piles of paper?

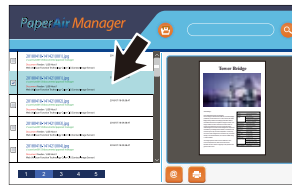


PaperAir Manager

1 Key in the key word(s) of document



2 Choose the selected document



3 The search document is opened



Book Cover

An ideal solution to scan thick documents. When a thick document or any bulky object needs to scan, the innovative cover can be lifted up to help flatten your item. As a result, an optimized image quality can be easily obtained since the item is more evenly lit.



No Power-Cord Required

The PaperAir 10 is powered by the USB cable to the PC. No external power adapter and cords are needed!

High Optical Resolution of 600 dpi

Despite its small footprint, the PaperAir 10 is big on resolution. With a true optical resolution of 600 dpi, the PaperAir 10 is able to reproduce image in fine detail and subtle shade.

No Warm Up Needed and Fast Scan Speed

The LED illumination system not only saves power, it doesn't require any warm up time. The PaperAir 10 is ready to go as soon as you turn it on. It's fast too! It only takes 7 seconds to scan an A4 size document.

Optimize your image with various image enhancement tools

The PaperAir Manager offers various image enhancement tools to make your scanned image ready to be used. With these features, your documents are automatically cropped, straightened, and rotated to the correct orientation, and your blank pages are automatically removed.

PaperAir Manager

PaperAir10 Product Specifications

Scanning Speed:	9 sec.
(at 300 dpi, A4 size)	18 sec. (Include Backhome)
Scanning Mode:	Flatbed
Scanning Technology:	CIS
Light Source:	LED
Color Depth:	48 bits (input)
	24 bits (output)
Optical Resolution:	600 dpi
Max. Document Size:	218.4 x 297 mm (8.6 x 11.7 in.)
Connectivity:	USB 2.0
File Format Outputs:	Searchable PDF, JPEG, DOCX, XLSX, PPTX
Electrical Requirements:	USB Bus Power
	5V/500mA
Power Consumption:	<1.5 W
Environmental Factors:	Operating temperature: 10°C to 35°C (50°F to 95°F)
	Operating humidity: 10% to 85%
Acoustical Noise:	Standby: <45 dB
	Operating: <50 dB
Dimensions	255 x 355 x 46 mm
(W x D x H):	11.04 x 13.98 x 1.81 in.
Weight:	1.4 kg (3.1 lb.)

We have endeavored to ensure that the information in this manual is accurate and that Avison is not responsible for printing or typographical errors. The above configuration is for reference only. The actual configuration (software, hardware) should be compiled with the specification described in the Avison Inc. owns the intellectual property rights of the product outlook and design and the product outlook and design are subject to change. Avison reserves the right to the interpretation of the product description. Avison, Inc. All rights reserved. Other company and product names mentioned in this document are trademarks of their respective companies. Wherein the third party product is for reference only and Avison does not warrant these products nor is responsible for the efficiency or use of these products.

System Requirements

CPU: Intel® Core i3 (2.1GHz) or Higher
Memory: 1GB (32bit Windows)
2GB (64bit Windows)
DVD-ROM: DVD ROM Drive
USB: USB2.0 Port (USB 3.0 Compatible)
Windows® Operating System:
Windows® XP SP3, Vista, 7, 8.x, 10 (32 & 64 bit)

Contents

PaperAir 10
Quick Guide
USB 2.0 Cable
CD-ROM includes:
-PaperAir Manager



Avison
www.avision.com